



This product must be installed by a qualified electrician in accordance with all national and local electrical and construction codes.  
Failure to comply with the installation instructions can result in serious injury or death.



**1 MaxiEDGE locate grub screws**



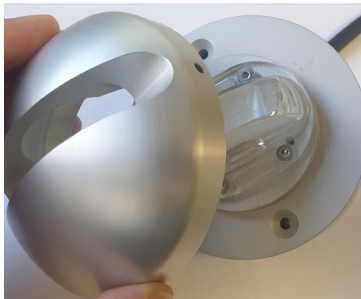
(a). Locate the two holes on each side of the MaxiEDGE.

**2 MaxiEDGE Glare guard removal**



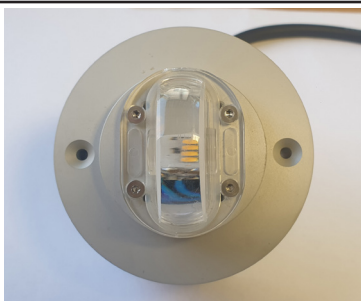
(a). Using a 1/16 Inch (1.5mm) hex key, loosen the grub screws. This will release the glare guard of the MaxiEDGE.

**3 MaxiEDGE Glare guard removal**



(a). Carefully remove the MaxiEDGE glare guard from the fixture  
(b). DO NOT TAMPER with internal screws.

**4 Secure fixture**



(a). Using the appropriate length M4 screws, secure the fixture.  
(b). Ensure the screw heads are flush with the surface  
(c). Replace MaxiEDGE glare guard and tighten the 1/16 Inch (1.5mm) hex key.  
(d). Fixture must be installed by a qualified electrician in accordance with all national and local electrical and construction codes.  
Failure to comply with the installation instructions can result in Serious injury or death.