



Data over Power distribution  
to the fixtures



2 Core  
Data over Power



DMX RGBW  
Controllable

# MaxiLED Focal Facade Series

## DMX RGBW



#### KEY FEATURES

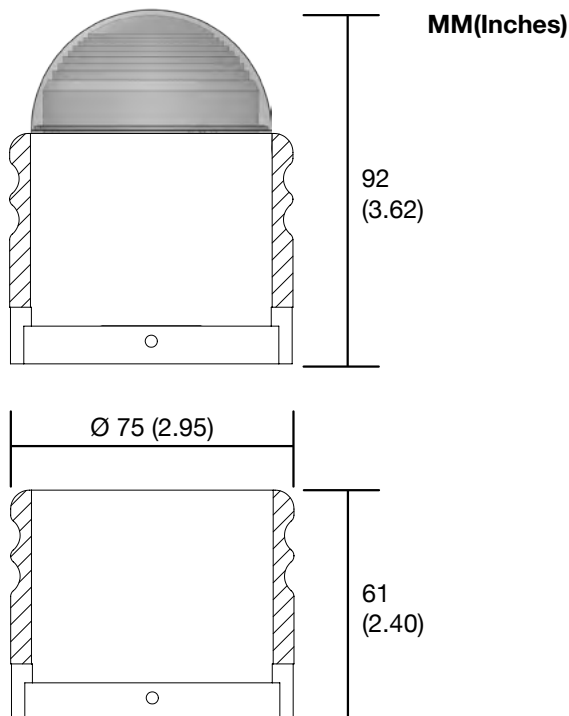
- DMX RGBW
- IP68
- Multi chip Cree® LED
- 48VAC
- Pre-wired festoon globes
- Any globe spacing as factory fitted



#### Product Overview

The MaxiLED Focal Facade high output provides durable low profile point-of-light fixtures that can be arranged in virtually any linear or matrix configuration. With up to 100 fixtures per run, Focal Facade installations deliver high impact lighting effects, or large-scale graphics to buildings and other structures utilizing the latest CREE LEDs.

#### Dimensions



#### Specifications

#### Focal Facade DMX RGBW

##### Dimming

DMX512 Dimmable  
(Data Over power):

YES

##### LED Options

(Cree XQE Led's)

RGBW:

YES

##### Electrical specification

Power input:

48VAC Data Over Power MaxiLINK system

LED Current:

100ma

Watts per unit:

2.4w

Max. Units per system

100 Units

(1.5mm sq cable):

Max distance from 1st to

last unit (1.5mm sq cable):

100m (328 ft)

Lumens RGBW (Frosted)

25 Lumens

Lumens RGBW (Clear)

98 Lumens

Lumen Maintenance 85%:

70,000Hrs

##### System Cable Distances

Max. cable 1.5mm sq from

MaxiLINK to 1st fitting:

15m (49 ft)

Max. cable 2.5mm sq from

MaxiLINK to 1st fitting:

75m (246 ft)

##### Protection

IP Rating:

IP68

Thermal Protection

cut out at 70°C:

YES

Operation Temperature:

-25 to +50

##### Finishes

Globe lenses:

UV stabilized polycarbonate

Black Anodised:

YES

Silver Anodised:

YES

RAL Powder Coat:

YES

##### Listings:

UL / cUL, CE, BS EN60598, IEC 60598

##### Dimensions & Weights

Diameter (mm):

75 mm (2.95 ins)

Height (mm):

92 mm (3.62 ins)

Weight:

0.27 KG (9.5Pounds)

##### Installation Options

Wall plate (Flush)

YES

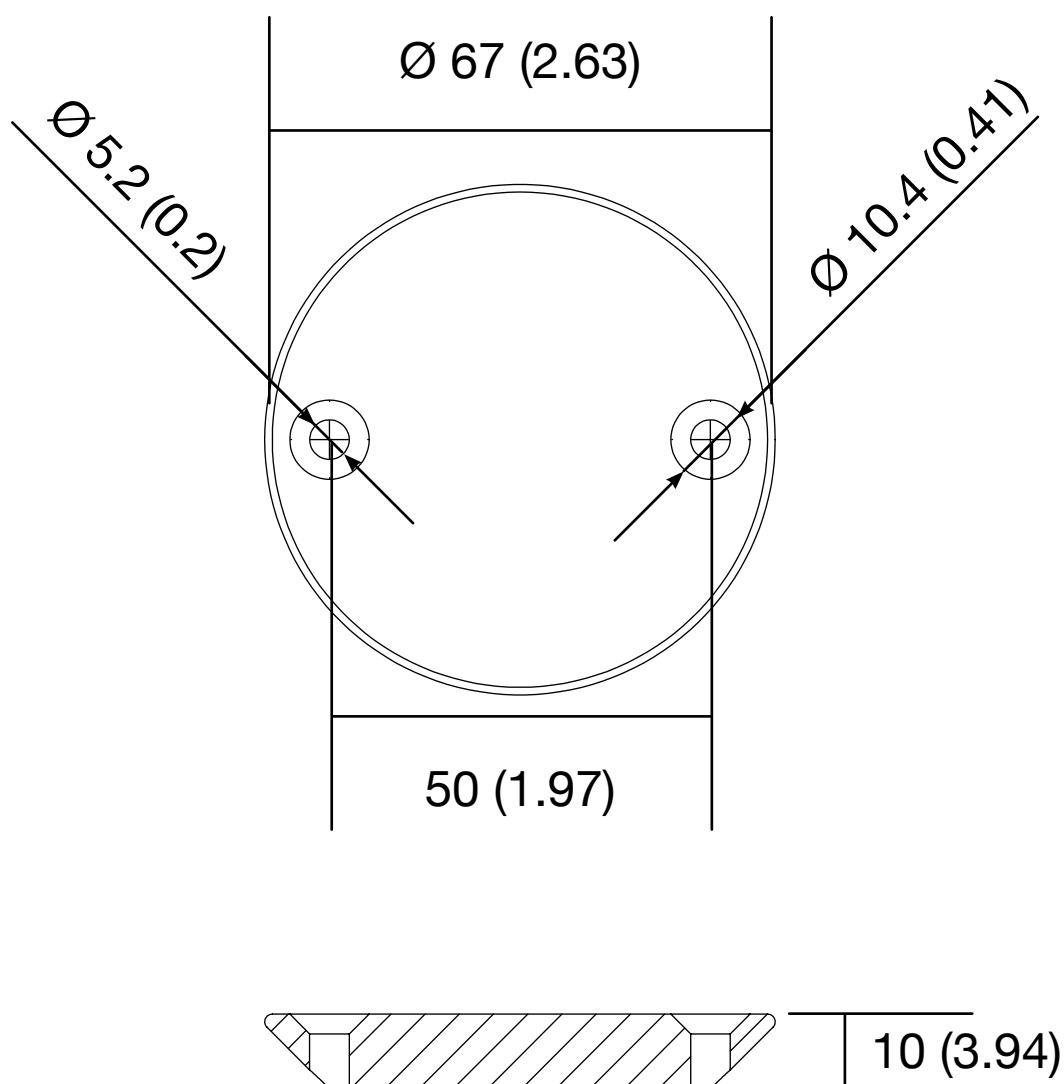


UK Designed and  
Manufactured

MaxiLED Lighting

FIXTURE IN INSTALLATION SLEEVE

MM (INCHES)



#### KEY FEATURES

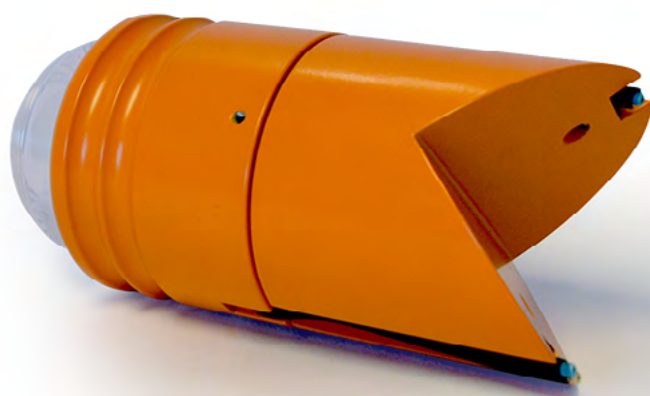
- Allows corners of structures to be highlighted.
- Available in any RAL Colour
- Various mounting angles available

#### Product Overview

---

This Focal facade accessory allows the fixture to be mounted to the corner of structures.

This accessory can be used to continue the run of Focal Facades across multiple sides of the building.

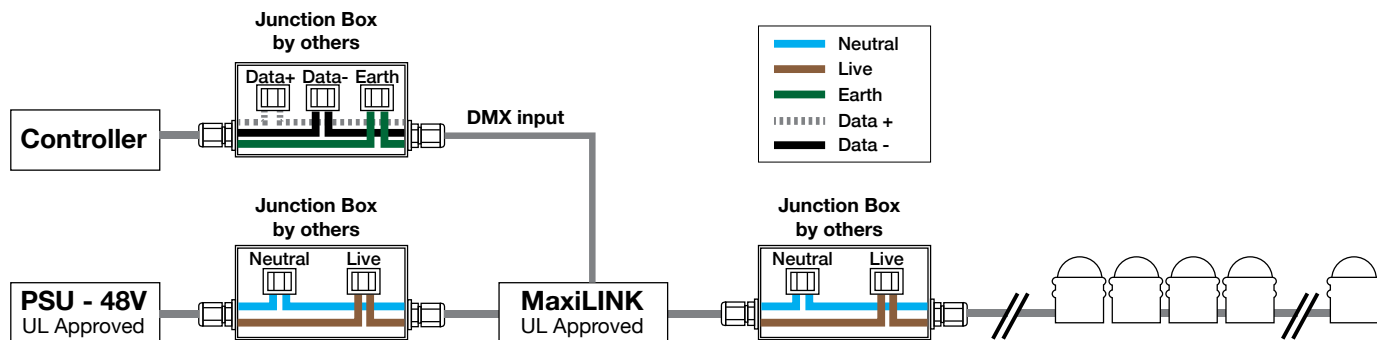


**MaxiLED Lighting**

Unit 2, Farrington Place, Rossendale Road Ind. Est. Burnley, Lancashire. UK. BB11 5TY  
T: +44 (0)845 8732 601 E: [sales@maxiledlighting.com](mailto:sales@maxiledlighting.com) Web: [www.maxiledlighting.com](http://www.maxiledlighting.com)

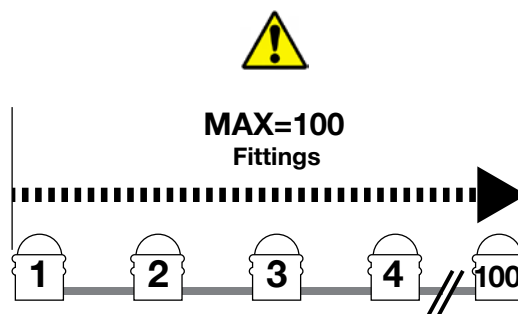
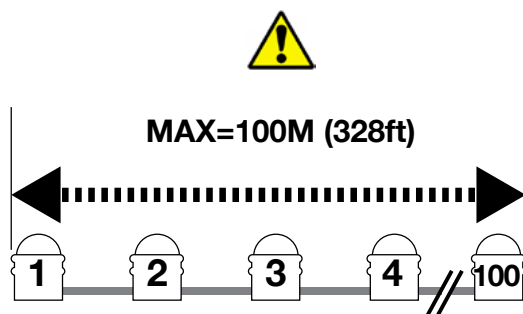


This product must be installed by a qualified electrician in accordance with all national and local electrical and construction codes.  
Failure to comply with the installation instructions can result in serious injury or death.



### NOTE:

Junction Boxes only needed on USA installations to comply with UL regulations



# MaxiLED Focal Facade Installation Instructions



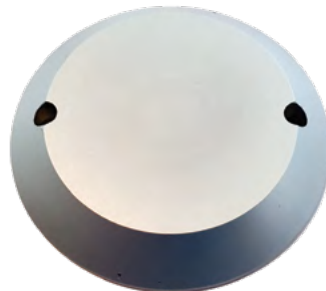
This product must be installed by a qualified electrician in accordance with all national and local electrical and construction codes.  
Failure to comply with the installation instructions can result in serious injury or death.



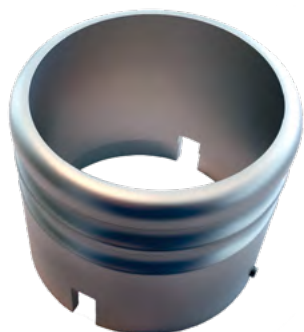
## 1 Parts supplied for installation



Mounting plate (front)



Mounting plate (wall side)



Housing



Hex wrench



Final installation example

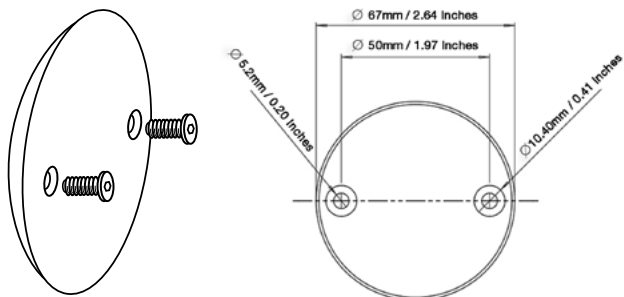




This product must be installed by a qualified electrician in accordance with all national and local electrical and construction codes.  
Failure to comply with the installation instructions can result in serious injury or death.



## 1 Fitting the mounting plate



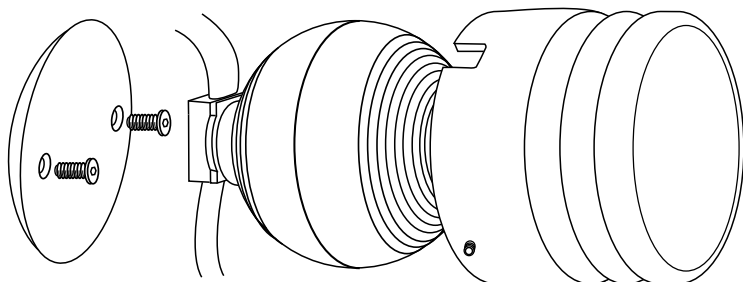
(a). Start installation at the end of the strand where the power will input.

(b). Measure and Mark out Facade fittings location.

(c). Mount the Facade fixing plate to the required location using the suitable fixings.

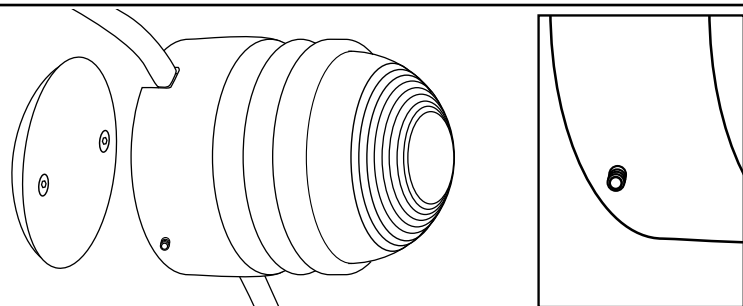
**NOTE:** Care must be taken when locating the mounting plate so that it corresponds with the pre-made cable harness.

## 2 Align MaxiLED Facade housing to Globe cable



(a). Place the required Globe into the Front Facade housing from the rear and align the cable into the two slots either side.

## 3 Secure globe and housing to the fixing plate

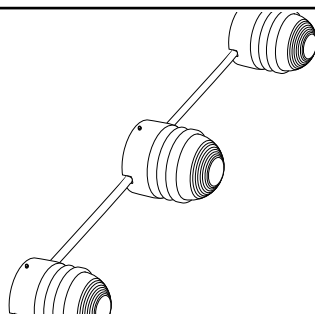


(a). With the Globe pushed into the Facade housing, push the unit up against the secured fixing plate.

(b). Using the supplied 2mm / 0.08 inch hex wrench tighten the two grub screws on either side of the housing.

(c). Ensure the housing is fitted flush against the surface.

## 4 Repeat Procedure



(a). Repeat process 1-3 until the installation is complete.

(b). Connect the installation to the correct power supply.  
(SEE INSTALLATION INSTRUCTIONS FOR POWER SUPPLY OPTIONS.)

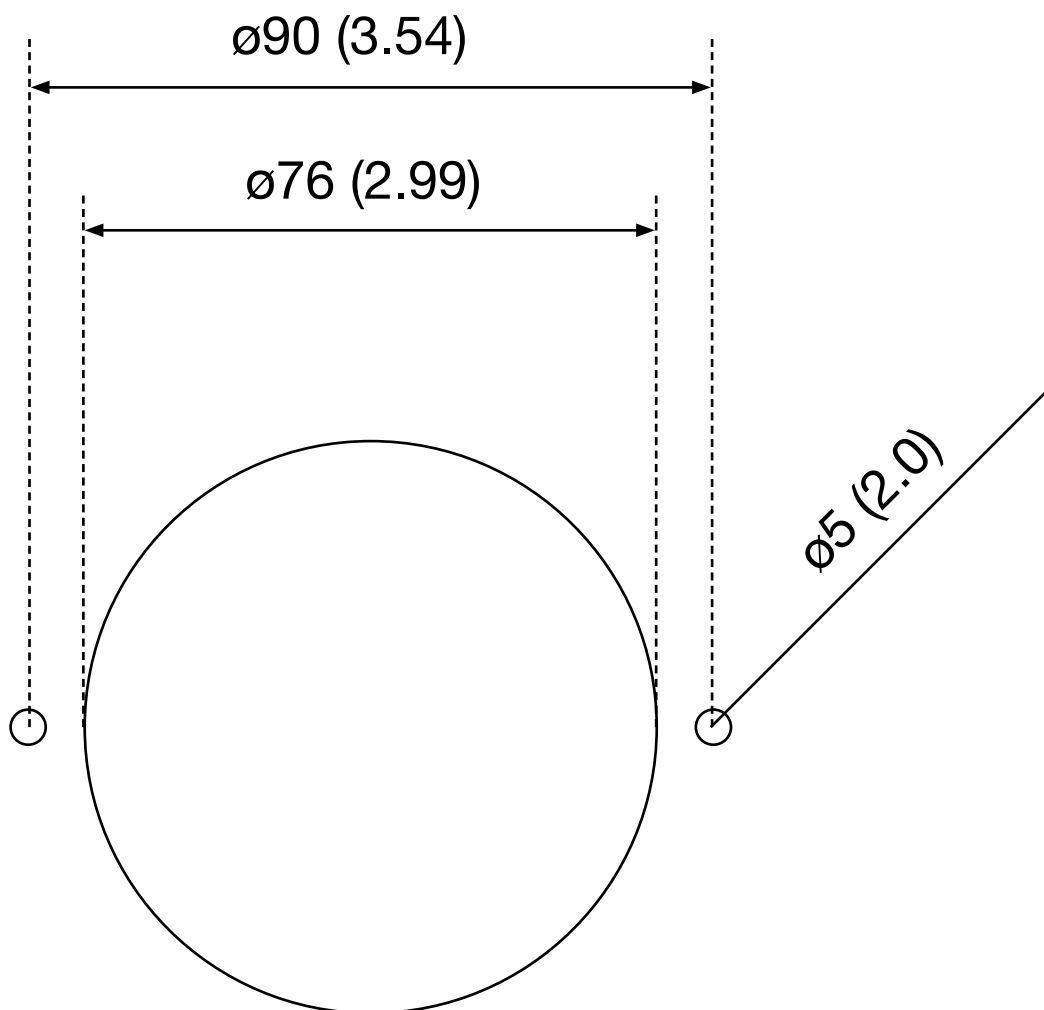


This product must be installed by a qualified electrician in accordance with all national and local electrical and construction codes.  
Failure to comply with the installation instructions can result in serious injury or death.



**1 Cutting template**

MM (INCHES)







## Focal Facade Series

### Order codes

Product		LED	Housing	Cable colour		Other	
Focal Facade Frosted	<b>FFF</b>	<b>RGBW(6000K)</b>	Aluminium Anodized Black <b>BA</b>	Black (Standard unless stated)	<b>CB</b>	End of line resistor	<b>ELR</b>
Focal Facade Clear	<b>FFC</b>	<b>RGBWW(3000K)</b>	Aluminium Anodized Silver <b>SA</b>	White	<b>CW</b>	Architectural corner bracket	<b>ACB</b>
		<b>IW</b>	RAL(Speak to sales) <b>RAL</b>				
		<b>2700</b>					
		<b>3500</b>					
		<b>6500</b>					
<b>EXAMPLE:</b>	<b>FFF</b>	<b>3500</b>	<b>SA</b>		<b>CB</b>		<b>ACBELR</b>

MaxiLED Lighting

Unit 2, Farrington Place, Rossendale Road Ind. Est. Burnley, Lancashire. UK. BB11 5TY  
T: +44 (0)845 8732 601 E: [sales@maxiledlighting.com](mailto:sales@maxiledlighting.com) Web: [www.maxiledlighting.com](http://www.maxiledlighting.com)