

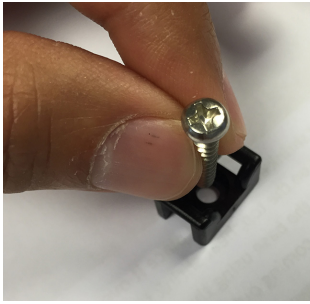
MaxiLED Strand Fixing Clip Installation Instructions



This product must be installed by a qualified electrician in accordance with all national and local electrical and construction codes. Failure to comply with the installation instructions can result in serious injury or death.



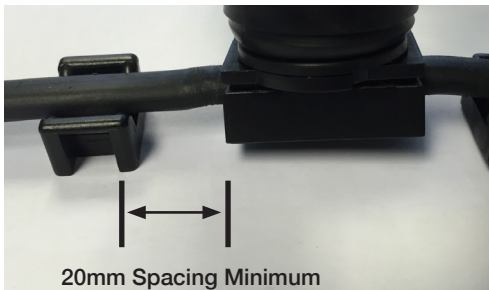
1 Fitting the Fixing Clip to the desired Surface



(a). Screw fix the Fixing clip to the desired surface.

NOTE: Correct screw must used to assure that the head is counter sunk within the fixing clip.

2 Spacing the Fixing Clip



(a). Ensure that the Spacing between each Fixing Clip and MaxiLED Globe is 20mm Minimum

3 Cable Tie the MaxiLED Strand Cable to the Fixing Clip



(a). Using the Supplied UV/Weather resistant Cable tie.

(b). Feed the Cable tie through the Fixing Clip and Secure the MaxiLED Strand Cable

4 Repeat Procedure

(a). Repeat process 1-3 until the installation is complete.

