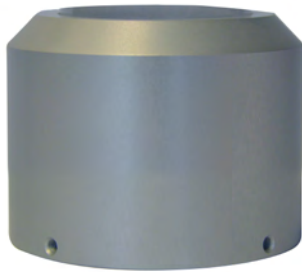


KEY FEATURES

- 512 DMX RGBW Controllable
- IP68
- Direct view
- Multi chip Cree® LED
- 48VAC Data over Power 2 wire system

Product Overview

Our MaxiDOT 302 fitting is the perfect solution for most building facades. Delivering direct viewing not only for marker light applications but for low resolution screen and matrix systems. Manufactured from quality materials and incorporating our Patented 2 wire data over power technology giving full DMX 512 control down the 2 power wires makes it the simplest to install and most cost effective product of its type in the market place today.



MaxiDOT 302

Specifications	MaxiDOT 302
Dimming	
DMX512 Dimmable (Data Over power):	YES
DMX 512 refresh rate:	44hz
LED Options	
(Cree XQE Led's)	
RGBW:	YES
Intelligent white 2700k-6000K:	YES
Single colour DMX:	YES
Lens	
Acrylic frosted lens. Direct viewing	YES
Electrical specification	
Power input:	48VAC Data Over Power MaxiLINK system
LED Current:	200ma
Watts per unit:	14.4w
Max. Units per system	
14 AWG (1.5mm sq) cable:	16
Max distance from 1st to last unit 14 AWG(1.5mm sq) cable:	100m
Lumens RGBW	
Clear Glass (Full On):	450
Lumens Intelligent white (Full On):	750
Lumen Maintenance 85%:	90,000Hrs
System Cable Distances	
Max. 14 AWG (1.5mm sq) cable from MaxiLINK to 1st fitting:	15m
Max. 10 AWG (2.5mm sq) cable from MaxiLINK to 1st fitting:	75m
Protection	
IP Rating:	IP68
Thermal Protection cut out at 70°C:	YES
Operation Temperature:	-25 to +50
Finishes	
MaxiSEAL Silver:	YES
MaxiSEAL Black:	YES
Black Anodised:	YES
Silver Anodised:	YES
RAL Powder Coat:	YES
Listings:	CE
Dimensions & Weights	
Diameter (mm):	125
Depth (mm):	85
Weight KG:	1.0KG



UK Designed and
Manufactured

MaxiLED Lighting

Unit 2, Farrington Place, Rossendale Road Ind. Est. Burnley, Lancashire. UK. BB11 5TY
T: +44 (0)845 8732 601

E: sales@maxiledlighting.com Web: www.maxiledlighting.com