

Cable Conduit / Trunking

- **PVC Mini Trunking - Self Adhesive White**
- **Half Circle Trunking**
- **Elastomer Hinge, Lid cannot detach**
- **Can be drilled**
- **Light weight, easy to handle and cut.**
- **Self Extinguishing**



A single-piece self-extinguishing plastic semi-circular trunking having elastomer (plasticised-rubber) hinged lid at one side and clip-in fastening facility at the other side, available in a variety of contemporary finishes and available with a full range of fast-fit male insert flush fitting accessories to conceal and protect surface cabling.

To be fixed on a wall or ceiling.

Specifications

Code	Width (W)	Length (L)	Height (H)	Paintable	Hinge	Weight	Quant. Per Pack
MaxiHCT	16.0	3000.0	8.0	Yes	Lid cannot detach	0.7kg per Metre	1

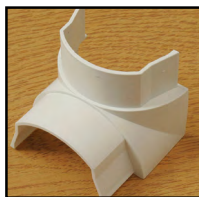
Material Specifications

Material	Operating Temperature	Flammability	UV Stable	Approvals
PVC	-30 °C to +60 °C	Self-Extinguishing	Will not discolour or turn brittle in sunlight	BS EN 50085 - 1.2005 Part 1

Accessories



16mm x 8mm
Flat Bend
White



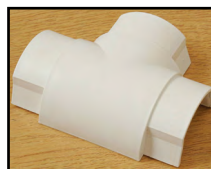
16mm x 8mm
Internal Bend
White



16mm x 8mm
Flat Bend
White



16mm x 8mm
Plain Coupler
White



16mm x 8mm
Equal Tee
White



16mm x 8mm
End Cap
White